

PELSAERT GROUP - BASILE ISLAND

PELSAERT (WA) PTY LTD

AQUACULTURE LICENCE APPLICATION - SITE PLAN

ALL THAT PORTION OF WATER WITHIN THE BOUNDARY DESCRIBED AND COLOURED GREEN ON THE PLAN BELOW COMPRISING A TOTAL AREA OF 228 (A) and 1,254 (B) SQUARE METRES RESPECTIVELY

113°57.79'E 113°57.82'E 113°57.85'E 113°57.89'E

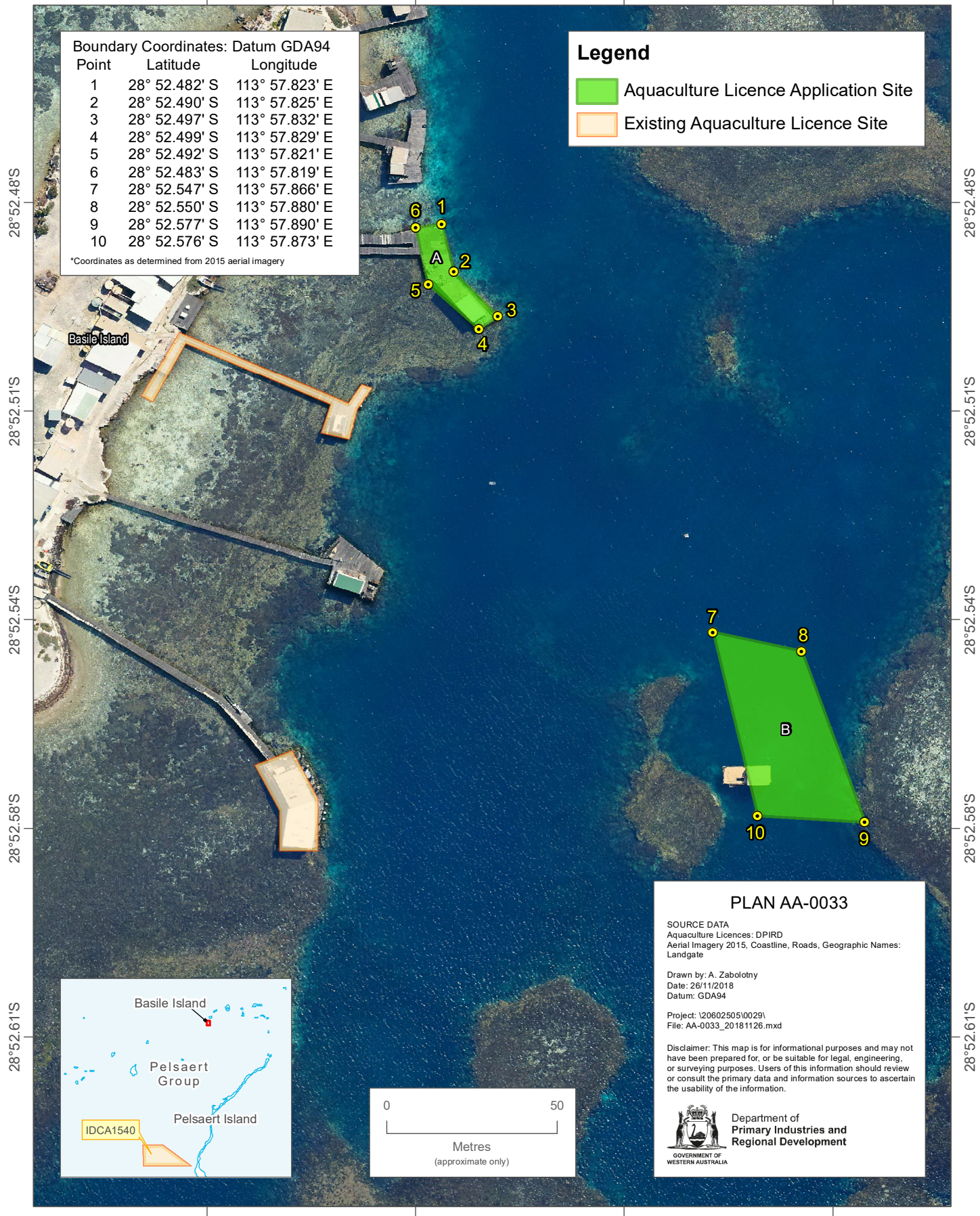
Boundary Coordinates: Datum GDA94

Point	Latitude	Longitude
1	28° 52.482' S	113° 57.823' E
2	28° 52.490' S	113° 57.825' E
3	28° 52.497' S	113° 57.832' E
4	28° 52.499' S	113° 57.829' E
5	28° 52.492' S	113° 57.821' E
6	28° 52.483' S	113° 57.819' E
7	28° 52.547' S	113° 57.866' E
8	28° 52.550' S	113° 57.880' E
9	28° 52.577' S	113° 57.890' E
10	28° 52.576' S	113° 57.873' E

*Coordinates as determined from 2015 aerial imagery

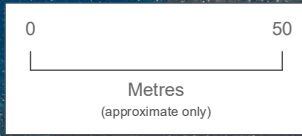
Legend

- Aquaculture Licence Application Site
- Existing Aquaculture Licence Site



28°52.48'S
28°52.51'S
28°52.54'S
28°52.58'S
28°52.61'S

28°52.48'S
28°52.51'S
28°52.54'S
28°52.58'S
28°52.61'S



PLAN AA-0033

SOURCE DATA
Aquaculture Licences: DPIRD
Aerial Imagery 2015, Coastline, Roads, Geographic Names:
Landgate

Drawn by: A. Zabolotny
Date: 26/11/2018
Datum: GDA94

Project: \20602505\0029\
File: AA-0033_20181126.mxd

Disclaimer: This map is for informational purposes and may not have been prepared for, or be suitable for legal, engineering, or surveying purposes. Users of this information should review or consult the primary data and information sources to ascertain the usability of the information.

Department of
**Primary Industries and
 Regional Development**

GOVERNMENT OF
WESTERN AUSTRALIA

113°57.79'E 113°57.82'E 113°57.85'E 113°57.89'E